

The Molly Top & Dress



The layplan for this pattern is available in the PDF file.

Body measurements (inches):

	8	10	12	14	16	18	20
Bust	33	35	37	39	41	43	45
Waist	26	28	30	32	34	36	38
Hip	36	38	40	42	44	46	48

Fabric required (metres):

This is for fabric with a directional print. If your fabric isn't directional you may need less.

	8	10	12	14	16	18	20
Top							
1.15m wide	2.1	2.1	2.1	2.1	2.1	2.1	2.1
1.40m wide	1.6	1.6	1.6	1.6	1.6	1.6	1.9
Dress							
1.15m wide	2.6	2.6	2.6	2.6	2.6	2.6	2.6
1.40m wide	2.1	2.1	2.1	2.1	2.1	2.1	2.4

Finished garment (inches):

	8	10	12	14	16	18	20
Bust	32.5	34.5	36.5	38.5	40.5	42.5	44.5
Waist	34	36	38	40	42	44	46
Hip	39	41	43	45	47	49	51
Top							
Length*	24.25	24.5	24.75	25	25.25	25.5	25.75
Dress							
Length*	34.5	34.75	35	35.25	35.5	35.75	36

*From the centre back neck to the hem.

The Lola Coat



The layplan for this pattern is available in the PDF file.

What size should I make?

The Lola coat is designed to be loose fitting. The pattern comes with four sizes XS - L, therefore we haven't included our standard body measurements. To cut the right size for you use the 'Back of Bust' measurements in the finished garment table but make sure to include plenty of extra room for ease. The 'Back of Bust' measurement is from bust point to bust point around your back (instead of the full bust measurement that would go all the way around your bust). The 'Back of Bust' measurement in the finished garment table is the distance around the back of the coat from bust point to bust point (excluding the Front Waterfall Panels). For example, if your 'Back of Bust' measurement is 29", we would recommend you cut a size S, as that will give you plenty of ease. If your 'Back of Bust' measurement is close to a size, we recommend you cut the size above.

Fabric required (metres):

This is for fabric with a directional print. If your fabric isn't directional you may need less.

	XS (6—8)	S (10—12)	M (14—16)	L (18—20)
Long Coat				
1.15m wide	5.2	5.2	5.2	5.2
Long Coat				
1.40m wide	4.6	4.6	4.6	4.6
Short Coat				
1.15m wide	4.3	4.3	4.3	4.3
Short Coat				
1.40m wide	3.9	3.9	3.9	3.9

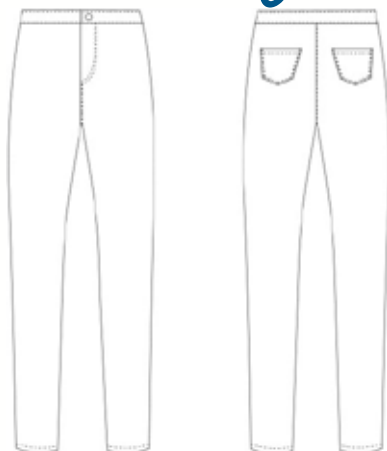
Finished garment (inches):

	XS (6—8)	S (10—12)	M (14—16)	L (18—20)
Back of Bust*	37	40	43	46
Sleeve Length**	25.5	26	26.5	27
Long Coat				
Length***	36	36.5	36.5	37
Short Coat				
Length***	24	24.5	24.5	25

*From bust point to bust point around the back of the coat (excludes the Front Waterfall Panels).

From the neckline to the sleeve hem. *From centre back neckline to hem.

The Mia Jeans



The layplan for this pattern is available in the PDF file.

Body measurements (inches):

	8	10	12	14	16	18	20
Waist	26	28	30	32	34	36	38
Hip	36	38	40	42	44	46	48

Fabric required (metres):

This is for fabric without a directional print. If your fabric is directional you may need more. You will also need a 6" regular zip, a jeans button and fusible stretch interfacing for the waistband. (You can use non-stretch interfacing, but the fit on the waistband will have to be perfect.)

	8	10	12	14	16	18	20
1.15m wide	1.8	1.9	1.9	2	2.1	2.1	2.1
1.40m wide	1.5	1.6	1.8	1.8	1.9	2	2

Finished garment (inches):

	8	10	12	14	16	18	20
Waist*	27	29	31	33	35	37	39
Hip**	36	38	40	42	44	46	48

* The jeans sit 1" below the natural waist. This measurement around the top of the jeans.

** The amount of ease in the hip area depends on how much stretch your fabric has, and how you fit the jeans.

— Sizing chart & fabric requirements —



The layplan for this pattern is available in the PDF file.

Body measurements (inches):

	8	10	12	14	16	18	20
Bust	33	35	37	39	41	43	45
Waist	26	28	30	32	34	36	38
Hip	36	38	40	42	44	46	48

Fabric required (metres):

This is for fabric without a directional print. If your fabric is directional you may need more. You will also need 10 x 12mm buttons. To make the optional tie belt you will need extra fabric. Cut two strips of fabric perpendicular to the selvedge, measuring 105cm x 12cm.

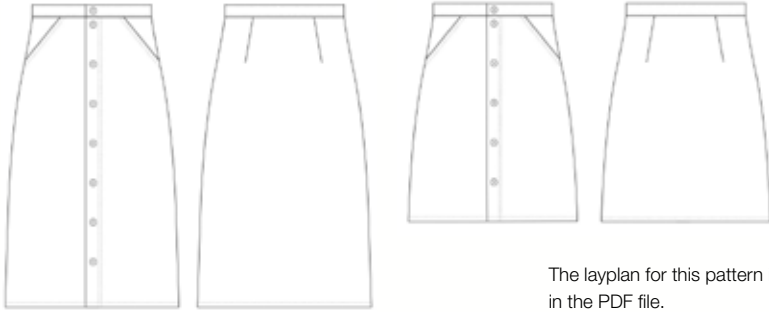
	8	10	12	14	16	18	20
Shirt							
1.15m wide	2.3	2.3	2.3	2.5	2.5	2.5	2.5
Shirt							
1.40m wide	2.3	2.3	2.3	2.4	2.4	2.4	2.4
Dress							
1.15m wide	3.1	3.1	3.1	3.2	3.2	3.2	3.2
Dress							
1.40m wide	3	3	3	3.1	3.1	3.1	3.1

Finished garment (inches):

	8	10	12	14	16	18	20
Bust	41	43	45	47	49	51	53
Waist	43	45	47	49	51	53	55
Hip	46	48	50	52	54	56	58
Shirt							
Length*	28.5	29	29	29.5	30	30	30.5
Dress							
Length*	44.5	45	45	45.5	46	46	46.5

*From the centre back neck to the hem.

The Erin Skirt



The layplan for this pattern is available in the PDF file.

Body measurements (inches):

	8	10	12	14	16	18	20
Waist	26	28	30	32	34	36	38
Hip	36	38	40	42	44	46	48

Fabric required (metres):

This is for fabric with a directional print. If your fabric isn't directional you may need less. You will need 5 x 25mm buttons for the short skirt or 8 x 25mm buttons for the long skirt.

	8	10	12	14	16	18	20
Long Skirt							
1.15m wide	1.6	1.6	1.6	1.7	1.7	1.7	1.7
Long Skirt							
1.40m wide	1.3	1.3	1.3	1.4	1.4	1.6	1.6
Short Skirt							
1.15m wide	1.4	1.4	1.4	1.4	1.4	1.4	1.4
Short Skirt							
1.40m wide	1.1	1.1	1.1	1.1	1.1	1.2	1.2

Finished garment (inches):

	8	10	12	14	16	18	20
Waist	27	29	31	33	35	37	39
Hip	37	39	41	43	45	47	49
Long skirt							
Length*	28.5	28.5	28.5	28.5	28.5	28.5	28.5
Short skirt							
Length*	19	19	19	19	19	19	19

*From the centre back waist to the hem.